

TICUA



TENNESSEE INDEPENDENT COLLEGES
AND
UNIVERSITIES ASSOCIATION

OVERVIEW OF THE 2010-11
TENNESSEE EDUCATION LOTTERY
SCHOLARSHIP RECIPIENTS

NOVEMBER 2011



Preface

The Tennessee Independent Colleges and Universities Association (TICUA) is pleased to present the results of the 2011 study on the impact of the Tennessee Education Lottery Scholarship (TELS) program. The study highlights trends in participation and retention of TELS recipients attending TICUA member campuses. Since the program's inception, students attending TICUA member campuses have benefited from over \$275 million in TELS awards.

In 2010-11 over 13,000 students attending TICUA member institutions received a TELS award. Of that total, more than 4,800 students also earned a supplemental award based on academic performance or financial need. Students at TICUA institutions received nearly \$54.1 million in lottery scholarships. Students from every county in the State except Clay County received a TELS award to attend a Tennessee private college or university.

TICUA welcomes your thoughts and comments on this publication through email at research@ticua.org.

Table of Contents

Preface	i
Table of Contents	iii
2010-11 Highlights	v
Overview of the 2010-11 Tennessee Education Lottery Scholarship	1
Program Overview	2
2010-11 TELS Program Award Amounts and Eligibility Criteria.....	3
Allocation and Distribution	5
Scholarship Recipients Attending TICUA Member Institutions and Dollars Awarded, 2004-05 to 2009-10.....	6
Distribution of Scholarship Recipients and In-State Undergraduate Enrollment, Fall 2010	7
Fall 2010 TICUA Lottery Recipients by Gender	8
Fall 2010 TICUA Lottery Recipients by Race	9
Distribution of TICUA Lottery Recipients by County, Fall 2010	10
Distribution of TICUA Lottery Recipients by Program Area, Fall 2010	11
Non-traditional (Age 25 and Older) TICUA Lottery Scholarship Recipients, Fall 2010	12
TICUA TELS Freshmen as a Percentage of Tennessee First-Time Freshmen	13
Fall 2010 TICUA TELS Recipients Also Receiving TSAA.....	14
Fall 2010 TICUA Scholarship Receipt by Qualification	15
Fall 2010 TICUA Average Hours Attempted Per Semester by Lottery Recipients	16
College Participation	17
Tennessee High School Graduates and TICUA First-Time Freshmen Enrollment.....	18
Residence of TICUA First-Time Freshmen.....	19
Scholarship Renewal	21
TICUA Scholarship Renewal by Cohort and Award Type	22
Fall 2009 to Fall 2010 Scholarship Renewal Rates by Award Type and Postsecondary Sector	23
Fall 2009 to Fall 2010 TICUA Scholarship Renewal by Qualification.....	24
TICUA Scholarship Renewal by Gender	25
TICUA Scholarship Renewal by Race/Ethnicity	26
TICUA Scholarship Renewal by Race and Lottery Scholarship Program, Fall 2009 First-Time Freshmen	27

TICUA Scholarship Renewal by ACT & High School GPA, Fall 2009 First-Time Freshman	28
TICUA Scholarship Renewal by ACT & High School GPA, Fall 2009 First Time Freshman Female Recipients	29
TICUA Scholarship Renewal by ACT & High School GPA, Fall 2009 First-time Freshman Male Recipients.....	30
TICUA Scholarship Renewal by ACT & High School GPA, Fall 2009 First-Time Freshman White Recipients.....	31
TICUA Scholarship Renewal by ACT & High School GPA, Fall 2009 First-Time Freshman African-American Recipients.....	32
Degree Completion	33
Fall 2005 TICUA First-Time Freshman 6-Year Graduation and Number of Degrees Awarded by Award Type.....	34
4-, 5-, and 6-Year Graduation Rates of TICUA Lottery Recipients	35
Fall 2005 TICUA First-Time Freshman 6-year Graduation Rates by Race/Ethnicity and Gender.....	36
Fall 2005 TICUA First-Time Freshman 6-Year Graduation Rate with Scholarship Intact	37

2010-11 Highlights

Allocation and Distribution

- In 2010-11, over 14,000 students attending Tennessee's private colleges and universities received nearly \$54 million from the Tennessee Education Lottery Scholarship (TELS) program.
- Of those students, 22% also received the supplemental Aspire Award (based on a student's financial need) and another 12% received the General Assembly Merit Scholarship (based on a student's superior academic performance).
- Sixty-three percent of all TELS recipients attending TICUA member institutions were female.
- In 2010-11, the majority (83%) of the TELS recipients attending private colleges and universities were White, while 9% were Black, 3% Asian, 2% Hispanic and 4% did not report race or ethnicity.
- In 2010-11, students from every county in the State except Clay County received a TELS award to attend a Tennessee private college or university.
- TICUA institutions continue to enroll proportionately higher levels of TELS recipients when compared to the percentage of in-state undergraduates enrolled in higher education in Tennessee.
- The percentage of first-time freshmen attending a TICUA member institution on a lottery scholarship has risen 3 percentage points since 2005.
- The majority (73%) of students at TICUA member institutions qualified for the lottery scholarship with both the required ACT score and high school GPA.

College Participation

- Since the inception of the lottery in 2004, both the number of high school graduates and the number of students enrolling at TICUA member institutions has grown.
- The percentage of Tennesseans entering TICUA member institutions has increased to the point that Tennesseans now make up more than 50% of the enrollment.

Scholarship Renewal

- Of the fall 2006 cohort, 45% of all TELS recipients at private colleges and universities retained their award three years later.
- Fifty-four percent of lottery recipients first attending a TICUA member institution in 2009 renewed the scholarship in fall 2010.
- The small difference in renewal rates after the first year indicates that regardless of the lottery program once a student renews the lottery program he/she is likely to maintain scholarship eligibility through graduation.
- Lottery recipients at TICUA member institutions (61%) have a higher first-to-second year renewal rate than the total lottery recipient population (54%).
- Females were more likely than males to renew the scholarship after one year.
- In general, renewal rates increase as the recipient's qualifying ACT score, high school GPA or both increase.

Degree Completion

- The graduation rate for all fall 2005 first-time freshmen lottery recipients at TICUA member institutions is 57%.
- Of students who first received the lottery scholarship as first-time freshmen in fall 2005, 43% graduated with the scholarship intact within 6 years.



Overview of the 2010-11 Tennessee Education Lottery Scholarship

This report highlights student participation in and renewal of the Tennessee Education Lottery Scholarship (TELS) program with regard to undergraduate students attending a TICUA member institution. This study spotlights data from the past year (academic year 2010-11) and includes data from the previous five academic years.

This report is comprised of four sections. The first section presents an overview of the lottery scholarship program and the participation of students at TICUA member institutions in the program. The remaining three sections look at the lottery scholarship recipients at TICUA member institutions in terms of college participation, scholarship renewal, and degree completion.

Program Overview

In 2004, the Tennessee General Assembly enacted the TELS program to award scholarships to Tennessee college students. The first students benefiting from this program enrolled in college in the fall of 2004 as first-year and second-year students. This program reached maturity in the 2007-08 academic year with five cohorts of students participating in the program. The inaugural class of first-time freshmen began to graduate in 2008.

The State created the program to address several public policy objectives:

- Improving academic performance in high school through college scholarship incentives
- Providing financial assistance to students to promote college access
- Retaining the State's best and brightest high school students by creating an incentive for remaining in the State to attend college
- Enhancing and promoting economic and community development through workforce development*

Based on findings in this report, the lottery program is meeting these objectives. The number of Tennessee residents studying at TICUA member institutions has increased since the inception of the lottery program to more than 50% of enrollment. In addition, more students are attending TICUA member institutions on lottery scholarships.

The TELS program initially was comprised of five distinct award types. The table on page 3 outlines for the academic year 2010-11 scholarship amounts and eligibility criteria for the four award types for which students at TICUA member institutions are eligible. The initial legislation authorized an additional scholarship known as the Wilder-Naifeh Technical Skills Grant, which provides money to students studying at the State's technology centers.

*Tennessee Education Lottery Scholarship Program Annual Report: Outcomes Through Fall 2010, THEC

Overview of the 2010-11 Tennessee Education Lottery Scholarship

2010-11 TELS Program Award Amounts and Eligibility Criteria

		Tennessee HOPE Scholarship (base award)	General Assembly Merit Scholarship (HOPE with merit supplement)	Aspire Award (HOPE with need-based supplement)	Access Award
	Award amount at 4-year institutions	\$4,000	\$5,000	\$5,500	\$2,750
	Award amount at 2-year institutions	\$2,000	\$3,000	\$3,500	\$1,750
Eligibility Requirements	High School GPA	3.00	3.75	3.00	2.75
	ACT Score	<u>or</u> 21	<u>and</u> 29	<u>or</u> 21	<u>and</u> 18-20
	Family Adjusted Gross Income	n/a	n/a	\$36,000 or less	\$36,000 or less

Source: The Tennessee Higher Education Commission, January 2011.

The HOPE Scholarship is a broad-based award for students whose high school GPA is at least 3.0 on a 4.0 scale or whose composite ACT score is at least 21. The General Assembly Merit Scholarship (GAMS) is a merit-based supplement to the base HOPE Scholarship earned by students with at least a 3.75 high school GPA and a composite score of at least 29 on the ACT. The Aspire Award is a need-based supplement to the base HOPE Scholarship granted to students whose families earn less than \$36,000/year. The HOPE Access Grant provides a one-year scholarship to students from families earning less than \$36,000/year with a high school GPA between 2.75 and 2.99 and a composite ACT score between 18 and 20.

A scholarship for non-traditional students (aged 25 or older) was modified during the 2008 legislative session. The modification enabled non-traditional students to become eligible for the lottery scholarship earlier in their academic career by reducing the number of hours non-traditional students needed to complete before becoming eligible for the lottery scholarship program.

In addition, the TELS program is comprised of several smaller scholarship programs including

- the Dual Enrollment Grant
- Foster Child Grant
- a graduate scholarship for teachers returning to school to be certified in math or science
- scholarships for veterans of the War on Terror and the conflicts in Iraq and Afghanistan (Helping Heroes Grant)

Overview of the 2010-11 Tennessee Education Lottery Scholarship

- rural health scholarships to increase the numbers of health service providers in underserved areas of the State

Since these programs do not have the scope of the original programs, they are not included in this analysis.

In 2011, the General Assembly tweaked the program to allow for summer usage of the scholarship and reinstated a cap of 120 credit hours as the total number of credit hours a student could receive the scholarship. The legislature also established a study committee to review the program and identify ways in which to bring program expenses more in line with program revenues.



Allocation and Distribution

Scholarship Recipients Attending TICUA Member Institutions and Dollars Awarded, 2004-05 to 2009-10

	2004-05		2005-06		2006-07	
	Students	Dollars	Students	Dollars	Students	Dollars
HOPE					5,580	\$19,841,036
GAMS	Included in subtotal		Included in subtotal		1,277	\$5,970,872
ASPIRE					2,188	\$10,787,289
Subtotal (HOPE, GAMS, ASPIRE)	5,291	\$16,641,422	7,082	\$25,214,593	9,045	\$36,599,197
HOPE Access Grant	12	\$21,000	25	\$54,000	15	\$33,125
HOPE Non Traditional						
HOPE Foster Care			0	\$0	2	\$4,564
Dual Enrollment			377	\$157,810	582	\$272,700
Math and Science Teachers						
Helping Heroes						
Rural Health Loan Forgiveness						
Total	5,303	\$16,662,422	7,484	\$25,426,403	9,644	\$36,909,586

	2007-08		2008-09		2009-10	
	Students	Dollars	Students	Dollars	Students	Dollars
HOPE	6,278	\$23,404,630	7,009	\$26,026,750	7,299	\$27,174,803
GAMS	1,482	\$7,230,851	1,616	\$7,918,513	1,705	\$8,310,375
ASPIRE	2,355	\$11,930,298	2,671	\$13,486,096	3,104	\$15,805,321
Subtotal (HOPE, GAMS, ASPIRE)	10,115	\$42,565,779	11,296	\$47,431,359	12,108	\$51,290,499
HOPE Access Grant	35	\$89,375	44	\$110,687	73	\$180,125
HOPE Non Traditional			244	\$709,000	461	\$1,394,993
HOPE Foster Care	5	\$12,966	2	\$5,526	0	\$0
Dual Enrollment	979	\$419,682	1,179	\$522,595	1,610	\$666,292
Math and Science Teachers	2	\$4,000	1	\$2,000	3	\$6,000
Helping Heroes			7	\$9,500	23	\$35,000
Rural Health Loan Forgiveness			21	\$237,962	35	\$374,132
Total	11,136	\$43,091,802	12,794	\$49,028,629	14,313	\$53,947,041

Highlights

- The number of scholarship recipients attending a TICUA member institution in 2011 has nearly tripled since the inception of the lottery program in 2004.
- While some of this growth can be attributed to the newer lottery scholarship programs, most of the growth is in recipients of the original lottery programs.

Allocation and Distribution

Distribution of Scholarship Recipients and In-State Undergraduate Enrollment, Fall 2010

Award Type	Sector	TBR Universities	TBR Community Colleges	UT Campuses	TICUA Member Institutions	Total
HOPE	Headcount	17,797	7,294	12,185	7,223	44,499
	Percent	40.0%	16.4%	27.4%	16.2%	100.0%
GAMS	Headcount	1,131	53	2,524	1,660	5,368
	Percent	21.1%	1.0%	47.0%	30.9%	100.0%
ASPIRE	Headcount	5,806	3,250	4,014	2,971	16,041
	Percent	36.2%	20.3%	25.0%	18.5%	100.0%
ACCESS	Headcount	94	117	19	37	267
	Percent	35.2%	43.8%	7.1%	13.9%	100.0%
TOTAL	Headcount	24,828	10,714	18,742	11,891	66,175
	Percent	37.5%	16.2%	28.3%	18.0%	100.0%

Total In-State Undergraduate Enrollment	Headcount	73,130	96,178	35,111	31,505	235,924
	Percent	31.0%	40.8%	14.9%	13.4%	100.0%

Data from Tennessee Higher Education Commission and may differ slightly from TICUA data

Highlights

- 18% of all lottery recipients attend a TICUA member institution
- 30.9% of all GAMS recipients attend a TICUA member institution
- 18.5% of all ASPIRE recipients attend a TICUA member institution
- TICUA member institutions enroll a greater percentage of students receiving the merit supplement (GAMS) and the need-based supplement (ASPIRE) than the share of total lottery recipients they enroll.
- TICUA member institutions enroll a greater percentage of lottery recipients (18%) than their share of in-state undergraduate students (13.4%).

Allocation and Distribution

Fall 2010 TICUA Lottery Recipients by Gender

Award Type	Gender	Number	Percentage	
Total	Female	7,766	63%	
	Male	4,647	37%	
HOPE	Female	4,801	62%	
	Male	2,896	38%	
ASPIRE	Female	2,036	67%	
	Male	3,019	33%	
GAMS	Female	911	55%	
	Male	750	45%	

Highlight

- In fall 2010, female recipients constituted 63% of lottery recipients attending TICUA member institutions. This is slightly greater than female representation in TICUA member institutions general population (58% female).

Allocation and Distribution

Fall 2010 TICUA Lottery Recipients by Race

Award Type	Gender	Number	Percentage	
Total	White, not Hispanic	10,280	83%	
	Black or African-American	1,081	9%	
	Unknown/Unreported	368	3%	
	Asian	320	3%	
	Hispanic or Latino	243	2%	
	Other	121	1%	
HOPE	White, not Hispanic	6,667	87%	
	Black or African-American	486	6%	
	Unknown/Unreported	217	3%	
	Asian	130	2%	
	Hispanic or Latino	134	2%	
	Other	63	1%	
ASPIRE	White, not Hispanic	2,145	71%	
	Black or African-American	543	18%	
	Unknown/Unreported	107	3%	
	Asian	108	4%	
	Hispanic or Latino	79	3%	
	Other	37	1%	
GAMS	White, not Hispanic	1,454	88%	
	Black or African-American	33	2%	
	Unknown/Unreported	44	3%	
	Asian	81	5%	
	Hispanic or Latino	29	2%	
	Other	20	1%	

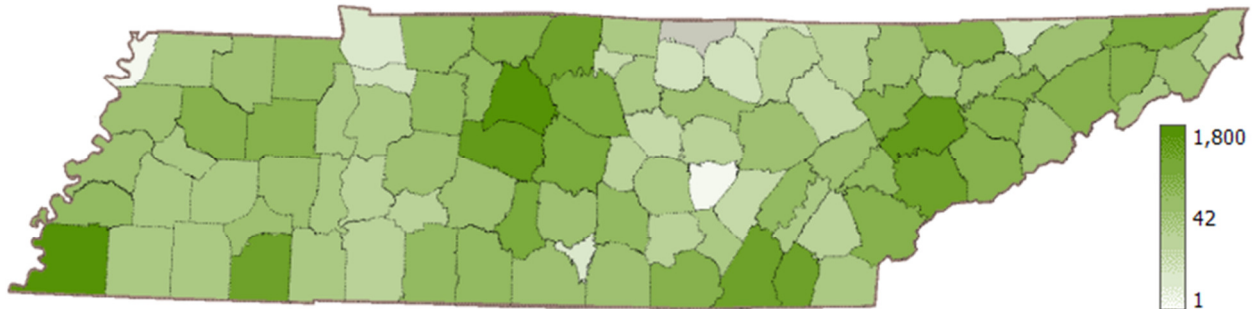
Highlights

- The racial composition of lottery recipients at TICUA member institutions has remained stable over the years. The lottery recipient distribution mirrors the distribution of the general State lottery recipient population (80% Caucasian, 10% African-American).*
- The racial composition of the general student population at TICUA member institutions (69% white, 16% African-American) is more diverse than the racial composition of their lottery recipients.

*Source: Tennessee Education Lottery Scholarship Annual Report 2011, THEC.

Allocation and Distribution

Distribution of TICUA Lottery Recipients by County, Fall 2010



Highlights

- Tennessee's independent colleges and universities enroll lottery recipients from every county in the State except Clay County
- The counties with the most lottery recipients attending a Tennessee independent college or university are:
 - Shelby (1,602)
 - Davidson (1,254)
 - Williamson (909)
 - Knox (837)
 - Hamilton (635)
- The distribution of lottery recipients closely resembles the population distribution of the State.

Allocation and Distribution

Distribution of TICUA Lottery Recipients by Program Area, Fall 2010

Top Program Areas	Number	Percentage
Health Professionals and Related Clinical Sciences	1,427	12%
Business, Management, Marketing, and Related Support Services	1,407	11%
Education	1,338	11%
Biological and Biomedical Sciences	1,076	9%
Liberal Arts and Humanities	702	6%
Visual and Performing Arts	649	5%
Psychology	560	5%
English Language/Letters	412	3%
Parks, Recreation, Leisure, and Fitness Studies	365	3%
Communication, Journalism, and Related Programs	337	3%

Highlight

- The most popular majors of lottery recipients at TICUA member institutions are Health Professions (12%), Business (11%), and Education (11%). This distribution mirrors the choice of majors in the general student population at TICUA member institutions.

Allocation and Distribution

Non-traditional (Age 25 and Older) TICUA Lottery Scholarship Recipients, Fall 2010

Gender	Percentage
Female	74%
Male	26%

Race/Ethnicity	Percentage
White, not Hispanic	70%
Black or African-American	23%
Unknown	5%
Other	1%
Hispanic or Latino	1%

Age Range	Percentage
25-29	21%
30-34	25%
35-39	21%
40-44	16%
45-49	11%
50-54	4%
55-59	2%
60+	0%

Highlights

- 74% of non-traditional recipients attending a TICUA member institution on a lottery scholarship are female.
- 70% of non-traditional recipients attending a TICUA member institution on a lottery scholarship are Caucasian.
- The ages of non-traditional recipients vary, but two-thirds are age 39 or below.

Allocation and Distribution

TICUA TELS Freshmen as a Percentage of Tennessee First-Time Freshmen

Term	TN FTF	On TELS	Percentage
Fall 2005	4,360	3,222	74%
Fall 2006	4,596	3,379	74%
Fall 2007	4,981	3,770	76%
Fall 2008	5,114	3,911	76%
Fall 2009	5,443	4,135	76%
Fall 2010	5,425	4,153	77%

Highlight

- The percentage of first-time freshmen attending a TICUA member institution on a lottery scholarship has risen 3 percentage points since 2005. Since more students are attending TICUA member institutions on a lottery scholarship this suggests that the scholarship goal of encouraging Tennessee’s best and brightest students to remain in State for higher education is being met.

Allocation and Distribution

Fall 2010 TICUA TELS Recipients Also Receiving TSAA

Scholarship Type	Number	Number Receiving TSAA	Percentage
Total	11,653	1,976	17%
HOPE	7,523	471	6%
Aspire	2,874	1,468	51%
GAMS	1,220	19	2%
Access	36	18	50%

Highlight

- Only 17% of students on the lottery scholarship also receive the need-based Tennessee Student Assistance Award (TSAA). For those students who receive a need-based lottery scholarship (Access and Aspire), the percentage who also receive TSAA increases to half.

Tennessee Student Assistance Award (TSAA)

- The TSAA provides non-repayable financial assistance to financially-needy undergraduate students (\$4,000 to students at 4-year private institutions) who are residents of Tennessee.
- The TSAA is awarded by application on a first-come, first-serve basis. Once all the appropriated money is awarded, no additional scholarships are awarded. In contrast, the TELS program awards scholarships to all eligible students.
- There were approximately 120,000 public and private college and university students in 2010-11 who were eligible for TSAA, but did not receive an award because the program is underfunded.

Allocation and Distribution

Fall 2010 TICUA Scholarship Receipt by Qualification

Scholarship Type	Both GPA and			Total
	ACT	GPA Only	ACT Only	
HOPE and ASPIRE	73%	19%	9%	100%
HOPE	76%	16%	9%	100%
ASPIRE	65%	25%	10%	100%

*Excludes GAMS recipients since GAMS eligibility requires both a 29 and greater ACT score and a 3.75 or greater high school GPA.

Highlight

- The majority of students at TICUA member institutions qualified for the lottery scholarship with both the required GPA and ACT scores. The number of students who qualified by their ACT score only is lowest (9%).

Allocation and Distribution

Fall 2010 TICUA Average Hours Attempted Per Semester by Lottery Recipients

Scholarship Type	Freshmen	Sophomore	Junior	Senior
HOPE	15.1	15.4	15.4	14.9
GAMS	15.8	16.0	16.0	15.1
ASPIRE	15.1	15.3	15.2	15.2

*Based on fall 2010 award type

Highlights

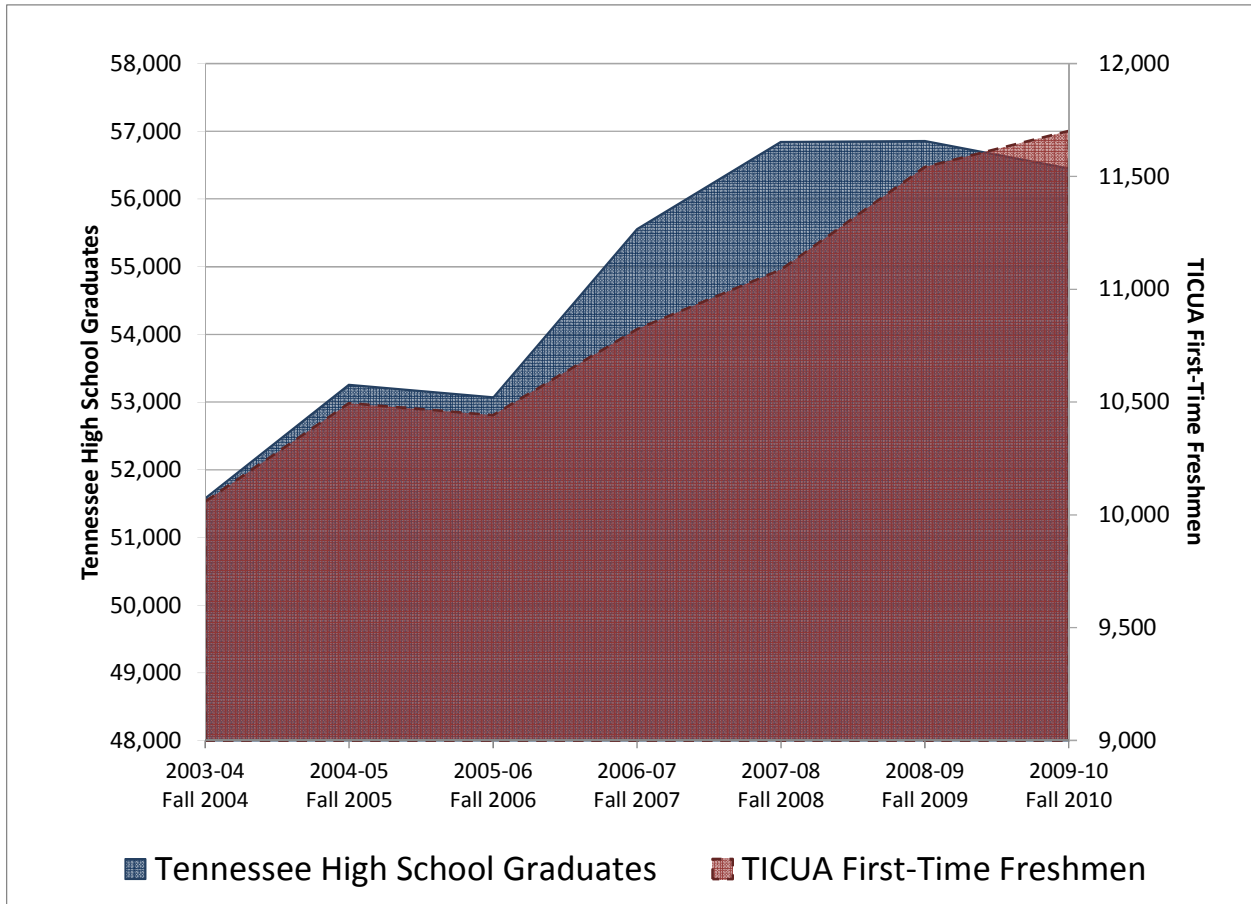
- The average attempted hours by lottery students was at least 14.9 hours per semester, keeping them on track to earn 120 credit hours in 4 years.
- Students receiving the GAMS supplement attempted more hours per semester during their freshmen, sophomore, and junior years than students receiving other lottery scholarship recipients.
- In general, lottery scholarship recipients attempted more hours during their sophomore and junior years than they attempted their freshmen or senior years.

Allocation and Distribution



College Participation

Tennessee High School Graduates and TICUA First-Time Freshmen Enrollment



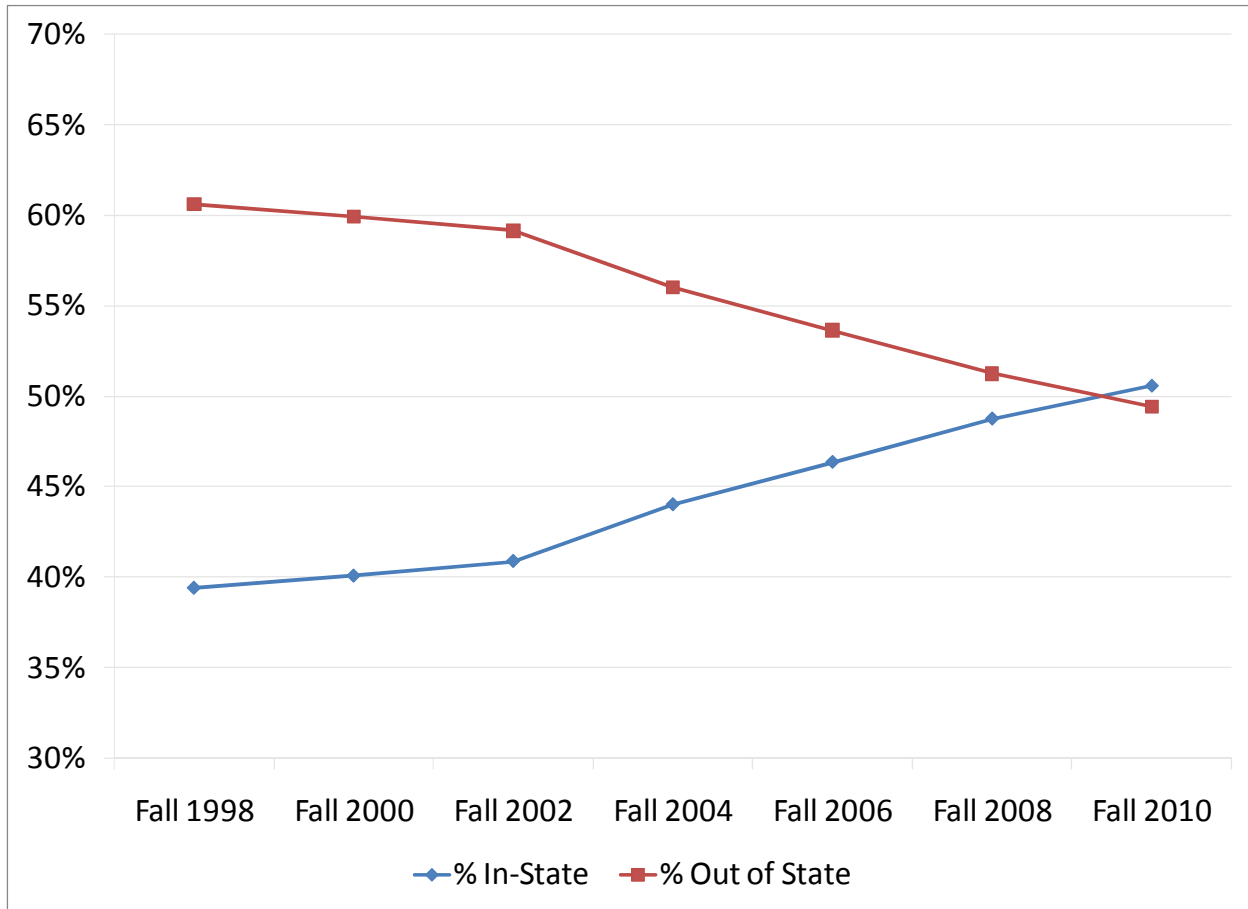
Highlights

- Since the inception of the lottery in 2004,[#] both the number of high school graduates[#] and the number of students enrolling at TICUA member institutions has grown.
- The number of students enrolling in TICUA member institutions has grown at a greater rate than the number of Tennessee high school graduates, offering support that the program goals of retaining the best and brightest Tennessee students and increasing college access are being met.

[#]Source: Western Interstate Commission on Higher Education, 2008

College Participation

Residence of TICUA First-Time Freshmen



Highlight

- Since the inception of the lottery scholarship in 2004, the percentage of Tennesseans entering TICUA member institutions has increased to the point that Tennesseans now make up more than 50% of the enrollment.

College Participation



Scholarship Renewal

TICUA Scholarship Renewal by Cohort and Award Type

Term	Award Type	Number of Students in Cohort	Renewal Rates		
			1-Year Renewal Rate	2-Year Renewal Rate	3-Year Renewal Rate
Fall 2006	HOPE	2,006	54%	45%	43%
	GAMS	380	87%	80%	75%
	ASPIRE	863	47%	39%	37%
	Total	3,248	56%	48%	45%
Fall 2007	HOPE	2,296	54%	47%	43%
	GAMS	427	87%	81%	76%
	ASPIRE	906	45%	38%	34%
	Total	3,629	56%	49%	44%
Fall 2008	HOPE	2,466	53%	45%	
	GAMS	425	84%	78%	
	ASPIRE	990	43%	36%	
	Total	3,881	54%	46%	
Fall 2009	HOPE	2,483	54%		
	GAMS	465	84%		
	ASPIRE	1,155	45%		
	Total	4,103	54%		

Highlights

- 54% of lottery recipients first attending a TICUA member institution in 2009 renewed the scholarship in fall 2010. This renewal is consistent with previous first-to-second year rates at TICUA member institutions.
- Scholarship renewal rates by program vary with the highest first-to-second year renewal rates for GAMS recipients – 84% for students entering in fall 2009 – followed by HOPE recipients and then ASPIRE recipients.
- The small difference in renewal rates after the first year indicates that, regardless of the lottery program, once a student renews the lottery program he/she is likely to maintain scholarship eligibility through graduation.

Scholarship Renewal

Fall 2009 to Fall 2010 Scholarship Renewal Rates by Award Type and Postsecondary Sector

System	HOPE	GAMS	ASPIRE	ACCESS	Total
TBR Universities	54%	92%	43%	21%	52%
TBR Community Colleges	45%	89%	41%	20%	44%
UT Campuses	60%	92%	55%	25%	62%
TICUA Institutions	61%	90%	50%	16%	60%
Total	55%	91%	46%	20%	54%

*Source: Tennessee Higher Education Commission Student Information System and may differ from TICUA data

Highlights

- Lottery recipients at TICUA member institutions (61%) have a higher first-to-second year renewal rate than the total lottery recipient population (54%).
- The first-to-second year renewal rates by program at TICUA member institutions are higher than the total population for the HOPE and ASPIRE awards.

Fall 2009 to Fall 2010 TICUA Scholarship Renewal by Qualification

Scholarship Type	Both GPA and ACT	GPA Only	ACT Only	TOTAL
HOPE and ASPIRE	72%	18%	10%	100%
HOPE	76%	15%	9%	100%
ASPIRE	63%	27%	10%	100%

*Excludes GAMS recipients since GAMS eligibility requires both a 29 and greater ACT score and a 3.75 or greater high school GPA.

Highlight

- Lottery recipients, regardless of the scholarship program, who qualified by both high school GPA and ACT score were most likely to renew the scholarship the following year. Those that qualified by ACT score alone, were least likely to renew the scholarship for a second year.

TICUA Scholarship Renewal by Gender

Gender	Fall 2009 FTF Cohort	Renewed Fall 2010	Percentage
Female	2,331	1,391	60%
Male	1,572	730	46%
Total	3,903	2,121	54%

*excludes Vanderbilt University Students

	Gender	HOPE	GAMS	ASPIRE	Total
Fall 2009 TELS First-Time Freshman Cohort	Female	1,404	198	729	2,331
	Male	1,029	159	384	1,572
	Total	2,433	357	1,113	3,903
Renewed Fall 2010	Female	847	177	367	1,391
	Male	470	130	130	730
	Total	1,317	307	497	2,121
Renewal Rate	Female	60%	89%	50%	60%
	Male	46%	82%	34%	46%
	Total	54%	86%	45%	54%

*excludes Vanderbilt University students

Highlights

- Females were more likely than males to renew the scholarship after one year.
- This pattern holds true regardless of the lottery scholarship program, although the smallest difference is found in the GAMS program.

Scholarship Renewal

TICUA Scholarship Renewal by Race/Ethnicity

Race	Fall 2009 FTF cohort	Renewed Fall 2010	Percentage
American Indian or Alaskan Native	12	6	50%
Asian	55	40	73%
Black or African-American	389	132	34%
Hispanic or Latino	65	39	60%
Two or More Races	25	14	56%
Unknown/Unreported	167	77	46%
White, not Hispanic	3,190	1,813	57%
Total	3,903	2,121	54%

*excludes Vanderbilt University students

Highlights

- White, not-Hispanic recipients (57%) had a higher scholarship renewal rate than the general TICUA recipient population (54%).
- White, not-Hispanic TICUA recipients (57%) had the same renewal rate as the similar group of students at all public and TICUA member institutions (57%).[#]
- African-American recipients (34%) had a lower scholarship renewal rate than the general TICUA recipient population (54%).
- African-American recipients at TICUA member institutions (34%) had a lower renewal rate than the similar group of recipients at all public and TICUA member institutions (38%).[#]

[#]Source: THEC lottery Report

TICUA Scholarship Renewal by Race and Lottery Scholarship Program, Fall 2009 First-Time Freshman

Race		HOPE	GAMS	ASPIRE	Total
Fall 2009 TELS First-Time Freshman Cohort	American Indian or Alaskan Native	9	1	2	12
	Asian	24	9	22	55
	Black or African-American	150	2	237	389
	Hispanic or Latino	29	5	31	65
	Two or More Races	15	1	9	25
	Unknown/Unreported	86	12	69	167
	White, not Hispanic	2,120	327	743	3,190
	Total	2,433	357	1,113	3,903
Renewed Fall 2010	American Indian or Alaskan Native	4	1	1	6
	Asian	18	8	14	40
	Black or African-American	59	2	71	132
	Hispanic or Latino	17	5	17	39
	Two or More Races	9	1	4	14
	Unknown/Unreported	37	10	30	77
	White, not Hispanic	1,173	280	360	1,813
	Total	1,317	307	497	2,121
Renewal Rate	American Indian or Alaskan Native	44%	100%	50%	50%
	Asian	75%	89%	64%	73%
	Black or African-American	39%	100%	30%	34%
	Hispanic or Latino	59%	100%	55%	60%
	Two or More Races	60%	100%	44%	56%
	Unknown/Unreported	43%	83%	43%	46%
	White, not Hispanic	55%	86%	48%	57%
	Total	54%	86%	45%	54%

Highlights

- For the HOPE program, Asian lottery recipients (75%) were most likely to renew the lottery scholarship in the second year, African-American recipients (39%) the least likely. The renewal rate of White HOPE recipients was 55%.
- For the ASPIRE program, Asian lottery recipients (64%) were most likely to renew the lottery scholarship in the second year, African-American recipients (30%) the least likely. The renewal rate of White ASPIRE recipients was 48%.
- The racial diversity in the GAMS program is too low to draw any conclusions.

Scholarship Renewal

TICUA Scholarship Renewal by ACT & High School GPA, Fall 2009 First-Time Freshman

		ACT Composite Score					Total	
		GPA Range	29 or higher	25-28	21-24	17-20		16 or less
Fall 2009 Freshman Cohort	High School GPA	3.75 or above	435	554	422	73	1	1,485
		3.50-3.74	101	218	323	134	9	785
		3.25-3.49	31	157	280	178	16	662
		3.00-3.24	28	80	217	196	35	556
		2.75-2.99	4	33	126			163
		2.50-2.74	5	21	67			93
		2.25-2.49	-	8	38			46
		2.24 or less	-	8	30			38
		Total	604	1,079	1,503	581	61	3,828
Renewed Scholarship Fall 2010	High School GPA	3.75 or above	375	429	279	39	-	1,122
		3.50-3.74	69	141	184	58	2	454
		3.25-3.49	15	80	123	59	7	284
		3.00-3.24	15	32	67	37	7	158
		2.75-2.99	1	14	28			43
		2.50-2.74	2	6	10			18
		2.25-2.49	-	1	4			5
		2.24 or less	-	1	3			4
		Total	477	704	698	193	16	2,088
Renewal Rate	High School GPA	3.75 or above	86%	77%	66%	53%	0%	76%
		3.50-3.74	68%	65%	57%	43%	22%	58%
		3.25-3.49	48%	51%	44%	33%	44%	43%
		3.00-3.24	54%	40%	31%	19%	20%	28%
		2.75-2.99	25%	42%	22%			26%
		2.50-2.74	40%	29%	15%			19%
		2.25-2.49	N/A	13%	11%			11%
		2.24 or less	N/A	13%	10%			11%
		Total	79%	65%	46%	33%	26%	55%

*Includes only students who have both an ACT and high school GPA reported; excludes Vanderbilt University students. For this reason, the total renewal rate differs slightly from the tables above.

Highlights

- In general, renewal rates increase as the recipient’s qualifying ACT Score, high school GPA or both increase.
- Lottery recipients with higher ACT scores and high school GPAs generally have higher renewal rates. The highest renewal rate (86%) is for students whose high school GPA was 3.75 or above and ACT score was 29 or above.

Scholarship Renewal

TICUA Scholarship Renewal by ACT & High School GPA, Fall 2009 First-Time Freshman Female Recipients

		ACT Composite Score					Total	
		GPA Range	29 or higher	25-28	21-24	17-20		16 or less
Fall 2009 Freshman Cohort	High School GPA	3.75 or above	251	370	306	55	1	983
		3.50-3.74	42	147	204	89	7	489
		3.25-3.49	8	80	166	118	13	385
		3.00-3.24	6	36	99	126	26	293
		2.75-2.99	3	9	59			71
		2.50-2.74	1	6	33			40
		2.25-2.49	-	3	8			11
		2.24 or less	-	1	11			12
		Total	311	652	886	388	47	2,284
Renewed Scholarship Fall 2010	High School GPA	3.75 or above	227	301	211	29	-	768
		3.50-3.74	32	99	120	45	2	298
		3.25-3.49	4	43	76	46	6	175
		3.00-3.24	6	15	41	26	6	94
		2.75-2.99	1	5	16			22
		2.50-2.74	-	2	7			9
		2.25-2.49	-	1	1			2
		2.24 or less	-	-	-			-
		Total	270	466	472	146	14	1,368
Renewal Rate	High School GPA	3.75 or above	90%	81%	69%	53%	0%	78%
		3.50-3.74	76%	67%	59%	51%	29%	61%
		3.25-3.49	50%	54%	46%	39%	46%	45%
		3.00-3.24	100%	42%	41%	21%	23%	32%
		2.75-2.99	33%	56%	27%			31%
		2.50-2.74	0%	33%	21%			23%
		2.25-2.49	N/A	33%	13%			18%
		2.24 or less	N/A	0%	0%			0%
		Total	87%	71%	53%	38%	30%	60%

*Includes only students who have both an ACT and high school GPA reported; excludes Vanderbilt University students. For this reason, the total renewal rate differs slightly from the tables above.

Highlight

- Overall, female lottery recipients had a 60% scholarship renewal rate, which is higher than the rate for male recipients (47%).

Scholarship Renewal

TICUA Scholarship Renewal by ACT & High School GPA, Fall 2009 First-time Freshman Male Recipients

		ACT Composite Score					Total	
		GPA Range	29 or higher	25-28	21-24	17-20		16 or less
Fall 2009 Freshman Cohort		3.75 or above	184	184	116	18	-	502
		3.50-3.74	59	71	119	45	2	296
		3.25-3.49	23	77	114	60	3	277
		3.00-3.24	22	44	118	70	9	263
		2.75-2.99	1	24	67			92
		2.50-2.74	4	15	34			53
		2.25-2.49	-	5	30			35
		2.24 or less	-	7	19			26
		Total	293	427	617	193	14	1,544
Renewed Scholarship Fall 2010	High School GPA	3.75 or above	148	128	68	10	-	354
		3.50-3.74	37	42	64	13	-	156
		3.25-3.49	11	37	47	13	1	109
		3.00-3.24	9	17	26	11	1	64
		2.75-2.99	-	9	12			21
		2.50-2.74	2	4	3			9
		2.25-2.49	-	-	3			3
		2.24 or less	-	1	3			4
			Total	207	238	226	47	2
Renewal Rate		3.75 or above	80%	70%	59%	56%	N/A	71%
		3.50-3.74	63%	59%	54%	29%	0%	53%
		3.25-3.49	48%	48%	41%	22%	33%	39%
		3.00-3.24	41%	39%	22%	16%	11%	24%
		2.75-2.99	0%	38%	18%			23%
		2.50-2.74	50%	27%	9%			17%
		2.25-2.49	N/A	0%	10%			9%
		2.24 or less	N/A	14%	16%			15%
		Total	71%	56%	37%	24%	14%	47%

*Includes only students who have both an ACT and high school GPA reported; excludes Vanderbilt University students. For this reason, the total renewal rate differs slightly from the tables above.

Highlight

- Overall, male lottery recipients had a 47% scholarship renewal rate, which is lower than the rate for female recipients (60%).

Scholarship Renewal

TICUA Scholarship Renewal by ACT & High School GPA, Fall 2009 First-Time Freshman White Recipients

		ACT Composite Score					Total	
		GPA Range	29 or higher	25-28	21-24	17-20		16 or less
Fall 2009 Freshman Cohort		3.75 or above	391	493	335	55	-	1,274
		3.50-3.74	93	200	265	105	3	666
		3.25-3.49	28	137	227	133	9	534
		3.00-3.24	24	67	175	130	11	407
		2.75-2.99	3	28	102			133
		2.50-2.74	5	15	51			71
		2.25-2.49	-	6	27			33
		2.24 or less	-	6	16			22
		Total	544	952	1,198	423	23	3,140
Renewed Scholarship Fall 2010	High School GPA	3.75 or above	336	383	227	30	-	976
		3.50-3.74	64	133	152	48	-	397
		3.25-3.49	13	68	101	46	4	232
		3.00-3.24	14	29	58	25	2	128
		2.75-2.99	1	13	24			38
		2.50-2.74	2	3	8			13
		2.25-2.49	-	1	3			4
		2.24 or less	-	1	-			1
			Total	430	631	573	149	6
Renewal Rate		3.75 or above	86%	78%	68%	55%	N/A	77%
		3.50-3.74	69%	67%	57%	46%	0%	60%
		3.25-3.49	46%	50%	44%	35%	44%	43%
		3.00-3.24	58%	43%	33%	19%	18%	31%
		2.75-2.99	33%	46%	24%			29%
		2.50-2.74	40%	20%	16%			18%
		2.25-2.49	N/A	17%	11%			12%
		2.24 or less	N/A	17%	0%			5%
		Total	79%	66%	48%	35%	26%	57%

*Includes only students who have both an ACT and high school GPA reported; excludes Vanderbilt University students. For this reason, the total renewal rate differs slightly from the tables above.

Highlight

- The pattern of greater renewal rates with higher ACT scores and high school GPAs exists for White and Black lottery recipients, but White students have higher retention rates even when controlling for ACT score and high school GPA.

Scholarship Renewal

TICUA Scholarship Renewal by ACT & High School GPA, Fall 2009 First-Time Freshman African-American Recipients

		ACT Composite Score					Total	
		GPA Range	29 or higher	25-28	21-24	17-20		16 or less
Fall 2009 Freshman Cohort	High School GPA	3.75 or above	4	24	45	15	1	89
		3.50-3.74	2	6	26	18	5	57
		3.25-3.49	-	3	29	32	7	71
		3.00-3.24	1	5	21	52	23	102
		2.75-2.99	1	2	15			18
		2.50-2.74	-	1	11			12
		2.25-2.49	-	-	7			7
		2.24 or less	-	1	9			10
		Total	8	42	163	117	36	366
Renewed Scholarship Fall 2010	High School GPA	3.75 or above	3	13	22	8	-	46
		3.50-3.74	1	2	14	6	2	25
		3.25-3.49	-	2	10	9	3	24
		3.00-3.24	-	1	5	10	5	21
		2.75-2.99	-	1	3			4
		2.50-2.74	-	-	2			2
		2.25-2.49	-	-	-			-
		2.24 or less	-	-	2			2
		Total	4	19	58	33	10	124
Renewal Rate	High School GPA	3.75 or above	75%	54%	49%	53%	N/A	52%
		3.50-3.74	50%	33%	54%	33%	40%	44%
		3.25-3.49	N/A	67%	34%	28%	43%	34%
		3.00-3.24	0%	20%	24%	19%	22%	21%
		2.75-2.99	0%	50%	20%			22%
		2.50-2.74	N/A	0%	18%			17%
		2.25-2.49	N/A	N/A	0%			0%
		2.24 or less	N/A	0%	22%			20%
		Total	50%	45%	36%	28%	28%	34%

* Includes only students who have both an ACT and high school GPA reported; excludes Vanderbilt University students. For this reason, the total renewal rate differs slightly from the tables above.

Highlight

- The pattern of greater renewal rates with higher ACT scores and high school GPAs exists for White and Black lottery recipients, but White students have higher retention rates even when controlling for ACT and high school GPA.

Scholarship Renewal



Degree Completion

Fall 2005 TICUA First-Time Freshman 6-Year Graduation and Number of Degrees Awarded by Award Type

Award Type	Fall 2005 FTF	Bachelor Degrees	
	Cohort	Awarded	Graduation Rate
HOPE	1,931	1,116	58%
GAMS	414	347	84%
ASPIRE	805	403	50%
Total	3,150	1,866	59%

*Degrees awarded through spring 2011

Highlights

- The 6-year graduation rate for the fall 2005 Lottery recipients at TICUA member institutions is 59%.
- GAMS recipients have the highest 6-year graduation rate at 84%.
- ASPIRE recipients have the lowest 6-year graduation rate at 50%.
- The 6-year graduation rate for all undergraduate students at TICUA member institutions is 60%.[#]

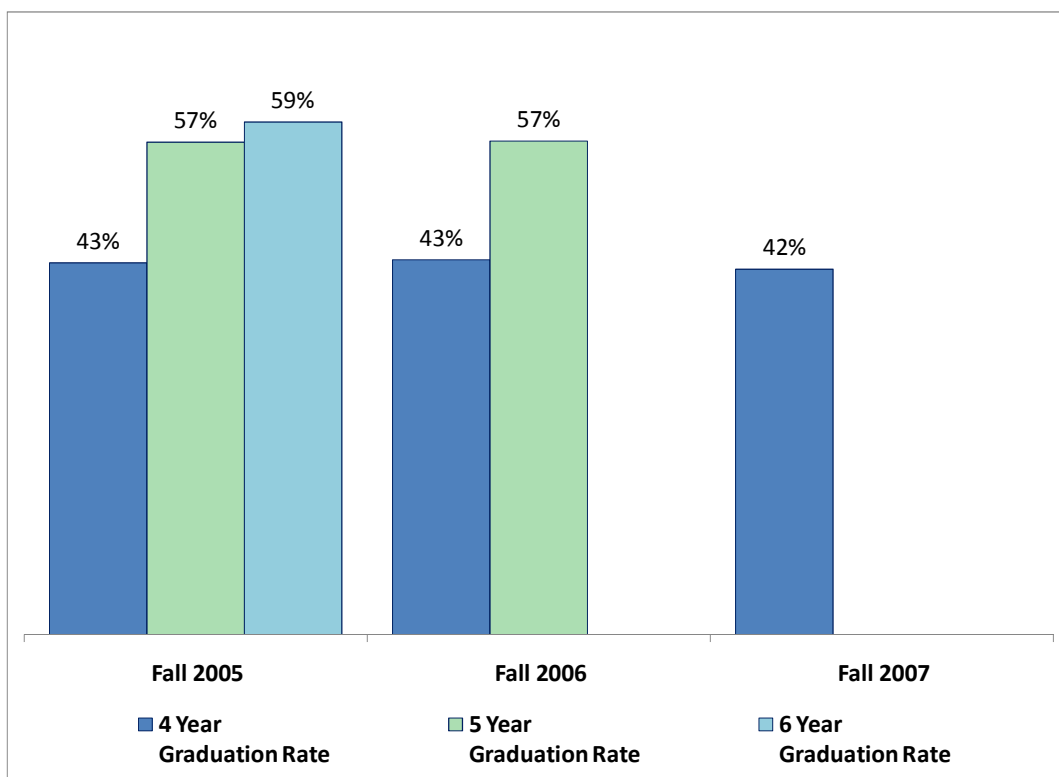
[#]The 60% graduation rate is for the fall 2002 entering cohort, as this is the most recent year for which complete data is available.

Degree Completion

4-, 5-, and 6-Year Graduation Rates of TICUA Lottery Recipients

TELS FTF Cohort	4 Year Graduation Rate	5 Year Graduation Rate	6 Year Graduation Rate
Fall 2005	43%	57%	59%
Fall 2006	43%	57%	
Fall 2007	42%		

*Degrees awarded through spring 2011



*Degrees awarded through spring 2011

Highlights

- 4-, 5-, and 6-year graduation rates are similar for the 2005, 2006, and 2007 entering cohorts.
- 43% of recipients in the 2005 and 2006 cohorts and 42% in the 2007 cohort earned a degree within 4 years.
- 59% of the 2005 cohort earned a degree within 6 years.

Degree Completion

Fall 2005 TICUA First-Time Freshman 6-year Graduation Rates by Race/Ethnicity and Gender

Race/Ethnicity	Fall 2005 FTF Cohort	Graduated	Graduation Rate
American Indian or Alaskan Native	10	3	30%
Asian	47	32	68%
Black or African-American	191	106	55%
Hispanic or Latino	45	19	42%
Unknown/Unreported	103	50	49%
White, not Hispanic	2,507	1,432	57%
Total	2,903	1,642	57%

* Excludes Vanderbilt University students

* Degrees awarded through spring 2011

Gender	Fall 2005 FTF Cohort	Graduated	Graduation Rate
Female	1,729	1,019	59%
Male	1,174	623	53%
Total	2,903	1,642	57%

* Excludes Vanderbilt University students

* Degrees awarded through spring 2011

Highlights

- The graduation rate for all fall 2005 first-time freshmen lottery recipients is 57%.
- Asian scholarship recipients (68%) had a greater graduation rate than the graduation rate for all recipients.
- African-American scholarship recipients (55%) had a slightly lower graduation rate than the rate for all recipients.
- Female scholarship recipients (59%) had a greater graduation rate than male recipients (53%).

Degree Completion

Fall 2005 TICUA First-Time Freshman 6-Year Graduation Rate with Scholarship Intact

Award Type	Fall 2005 FTF Cohort	Graduated on TELS	Graduation Rate
HOPE	1,869	776	42%
GAMS	284	211	74%
ASPIRE	750	258	34%
Total	2,903	1,249	43%

* Excludes Vanderbilt University students

Highlights

- Of students who first received the lottery scholarship as first-time freshmen in fall 2005, 43% graduated with the scholarship intact within 6 years.
- Students who received the GAMS scholarship were more likely to graduate with the scholarship intact than other students (74%).



TICUA Members

Aquinas College
Baptist College of Health Sciences
Belmont University
Bethel University
Bryan College
Carson-Newman College
Christian Brothers University
Cumberland University
Fisk University
Free Will Baptist Bible College
Freed-Hardeman University
Johnson University
King College
Lane College
Lee University
LeMoyne-Owen College
Lincoln Memorial University
Lipscomb University
Martin Methodist College
Maryville College
Meharry Medical College
Memphis College of Art
Middle Tennessee School of Anesthesia
Milligan College
Rhodes College
Sewanee: The University of the South
Southern Adventist University
Southern College of Optometry
Tennessee Wesleyan College
Trevecca Nazarene University
Tusculum College
Union University
Vanderbilt University
Watkins College of Art, Design, & Film

TICUA Staff

Dr. Claude O. Pressnell, Jr.
President

Dr. Diane Berty
Vice President

Laura Cornick
Assistant Director of Administration
and Logistics

C. Gregg Conroy
Executive Director
TICUA Benefit Consortium

Amy Heckman
Assistant Director of Research
and Technology

Dr. Patrick L. Meldrim
Vice President

Jason Powell
Director
Coalition of Healthy and Safe Campus
Communities (CHASCo)

Darlene Thornton
Administrative Coordinator
TICUA Benefit Consortium



1031 17TH AVENUE, SOUTH
NASHVILLE, TN 37212-2201
TELEPHONE 615-242-6400 · FAX 615-242-8033

WWW.TICUA.ORG